



SG-IP69K

IP69K tubular protection for safety light curtains

GENERAL INFORMATION

SG-IP69K accessory, is a PMMA acrylic tube used to protect and seal the safety light curtains of SG2, SG4 and SG BODY COMPACT series. Thanks to SG-IP69K accessory the IP protection of the safety light curtain is increased from IP65 to IP67, IP68 and IP69K.

The Gore-Tex membrane on the caps prevents entry of water or dirt and prevents the presence of condensation inside. The connection cable for light curtain is protected and kept in to his side by a metric chock M16 that prevents the entry of water or dirt.

2 stainless steel rotating brackets, to be mounted on the product caps, are provided and guarantee a quick and easy installation.

HIGHLIGHTS

- IP67, IP68 and IP69K protection
- PMMA acrylic tube
- Unique profile with different lengths suitable for all controlled heights of SG2, SG4 Series (150 - 1800 mm) and SG BODY COMPACT series (2, 3 and 4 rays).
- Does not compromise the performance of the light curtain in terms of alignment.
- Do not change the EAA value

TYPICAL APPLICATIONS

The SG-IP69K accessory is particularly used where high levels of humidity and temperature are present and machines or equipments are frequently washed with hot water (up to 80°C) at high pressure (up to 100 bar s) and / or cleaned with detergents.

SG-IP69K is particularly suitable for FOOD industry applications: beverage production, meat slaughter, sausage production, milk / cheese industry, etc. ...

PACKAGE CONTENTS

The package contains the following items:

a) PMMA transparent tube (1 pcs)	• Nuts and bolts:
b) Lower assembled support (1 pcs)	- M5 square nut (4 pcs)
c) Upper assembled support (1 pcs)	- TE M5x6 UNI 5739 screw (4 pcs)
d) Closing cap with silicone compound OR (2 pcs)	- UNI 8842 J5 metallic elastic washer (4 pcs)
e) INOX rotating brackets (2 pcs.)	- INOX TCEI M4x8 UNI 5931 screw (6 pcs)
	- A4 UNI 8840 ZB metallic washer (6 pcs)
	- INOX TCEI M4x18 UNI 5931 screw (8 pcs)

Sub-assembly **b-d** and **c-d** are pre-installed and inserted inside PMMA tube **a** to increment package robustness.

DECLARATION OF CONFORMITY

We DATASENSOR S.p.A. declare under our sole responsibility that these products are conform to the 2004/108/CE, 2006/95/CE Directives and successive amendments



WARRANTY

DATASENSOR S.p.A. warrants its products to be free from defects.

DATASENSOR S.p.A. will repair or replace, free of charge, any product found to be defective during the warranty period of 36 months from the manufacturing date.

This warranty does not cover damage or liability deriving from the improper application of DATASENSOR products.

DATASENSOR S.p.A. Via Lavino 265
40050 Monte S. Pietro - Bologna - Italy
Tel: +39 051 6765611 Fax: +39 051 6759324
<http://www.datasensor.com> e-mail: info@datasensor.com



DATASENSOR S.p.A. cares for the environment: 100% recycled paper.
DATASENSOR S.p.A. reserves the right to make modifications and improvements without prior notification.

MECHANICAL INSTALLATION

ASSEMBLY INSTRUCTIONS

First of all, remove closing caps **d** from sub-assemblies **b** and **c** then remove the aforementioned **b** and **c** from tube **a**. After these operations you have to obtain the situation shown in Fig.1.

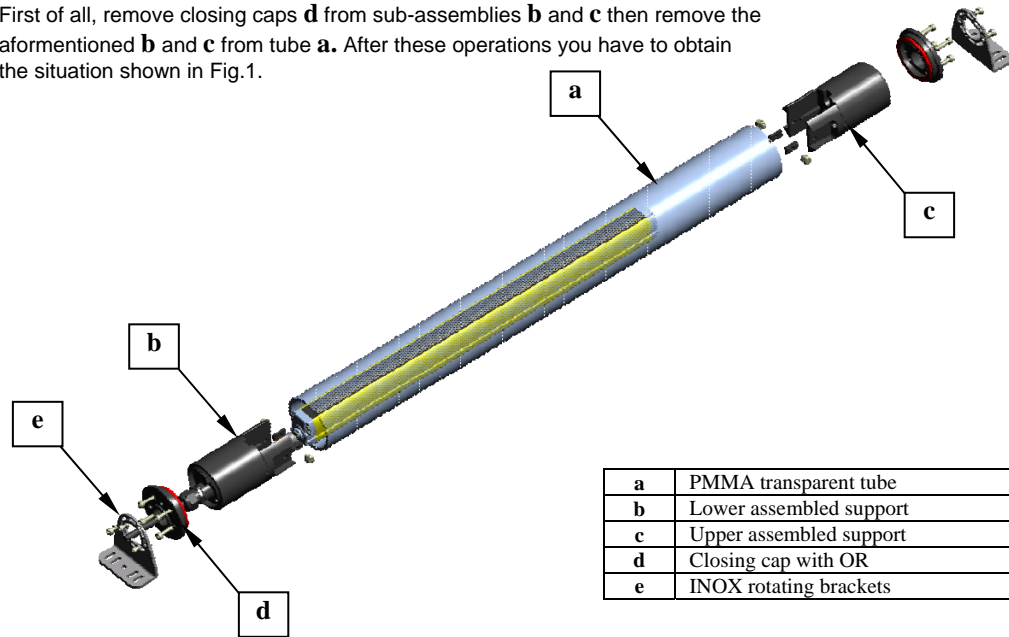


Fig.1

Place the M5 square nuts on the inner side of the support wings, aligned with the holes and fix them not completely with the TE M5x6 UNI 5739 screws (and special washers) in order to leave them a moving range (Fig.2 and Fig.3).

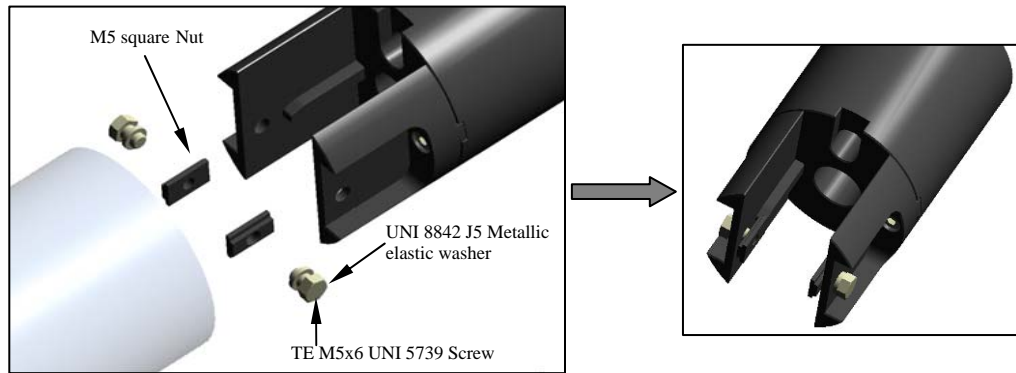
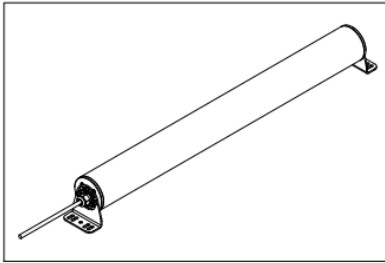
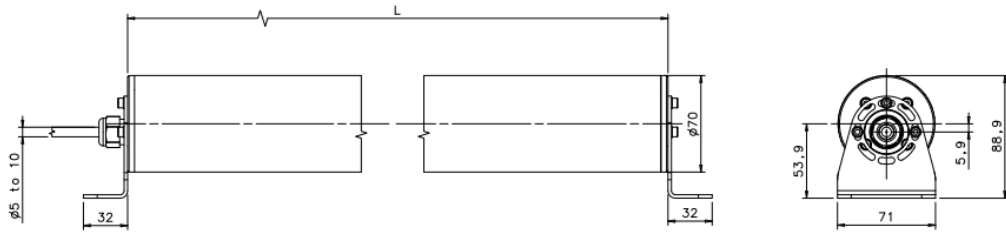


Fig.2

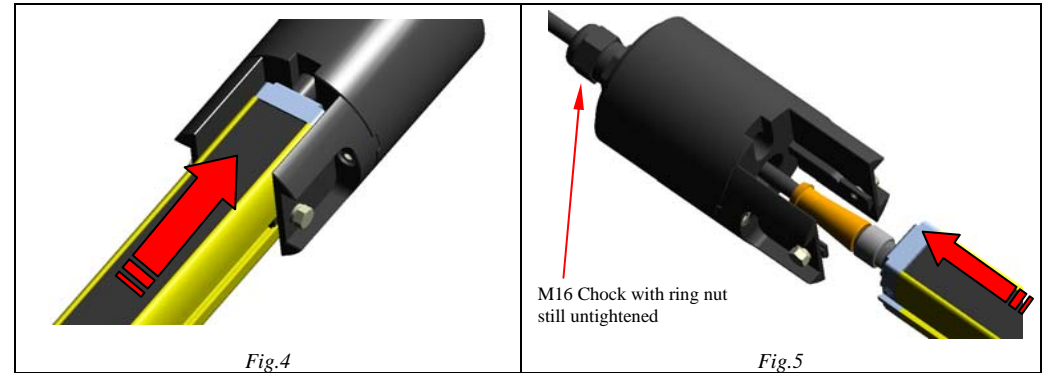
Fig.3

OVERALL DIMENSIONS

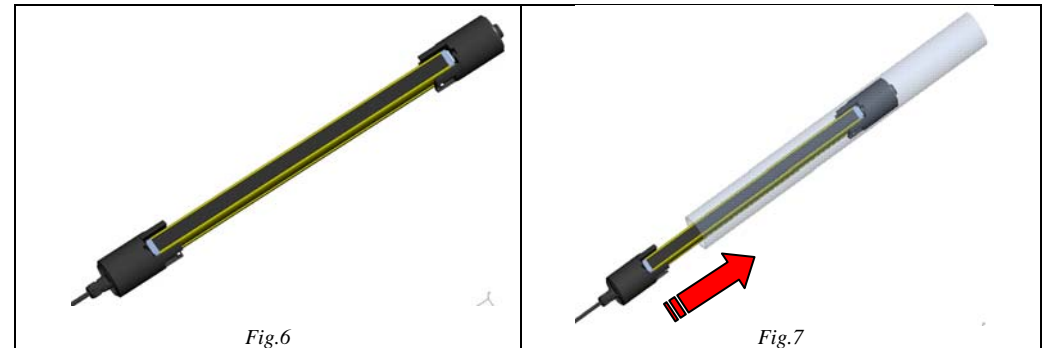


MODEL	L (mm)
SG-IP69K 150	373,5
SG-IP69K 300	520,7
SG-IP69K 450	670,8
SG-IP69K 600	820,7
SG-IP69K 750	970,8
SG-IP69K 900	1120,7
SG-IP69K 1050	1270,7
SG-IP69K 1200	1420,8
SG-IP69K 1350	1570,7
SG-IP69K 1500	1720,8
SG-IP69K 1650	1870,8
SG-IP69K 1800	2020,8

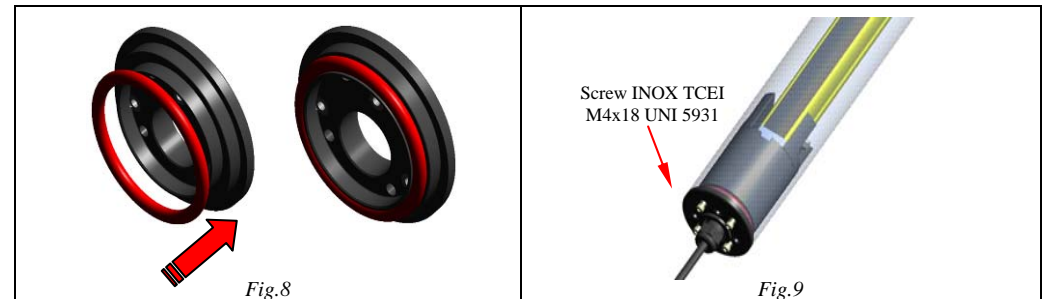
Then, insert the adapters in the Datasensor safety light curtain lateral grooves (Fig.4) until you reach the back side, and then fully tighten the screws to fix the curtain to **c**. Repeat the same operation also for **b** part, keeping attention to pass safety light curtain cable (that must be connected to the curtain before starting this assembly procedure) through the hole corresponding to M16 chock before completely tightening the screws (Fig.5).



When both part **b** and **c** are completely installed with the curtain finally firmly tighten the chock nut to fix the cable. Check once again that the M5x6 UNI TE 5739 screws are well locked on their elastic washers. Once the system appears like shown in the Fig.6 it can then be inserted inside the transparent tube (Fig.7).



At this point, you have to prepare the 2 closing caps with corresponding OR gasket, as in Fig.8, and then apply them to both upper and lower sides of the PMMA tube.



Complete the mounting tightening the 4 INOX TCEI M4x18 UNI 5931 screws for both sides for the complete compression of the OR seal against the tubular inner surface (Fig.9).

For brackets mounting place them on both caps aligned to appropriate bracket's central hole, and then lock in the desired angular position, with 3 INOX TCEI M4x8 UNI 5931 screws (Fig.10).

The bracket is designed to allow all the "main" positions, with intermediate angular adjustment range within 20 and 30 degrees depending on the position required (Fig.11 and Fig.12).

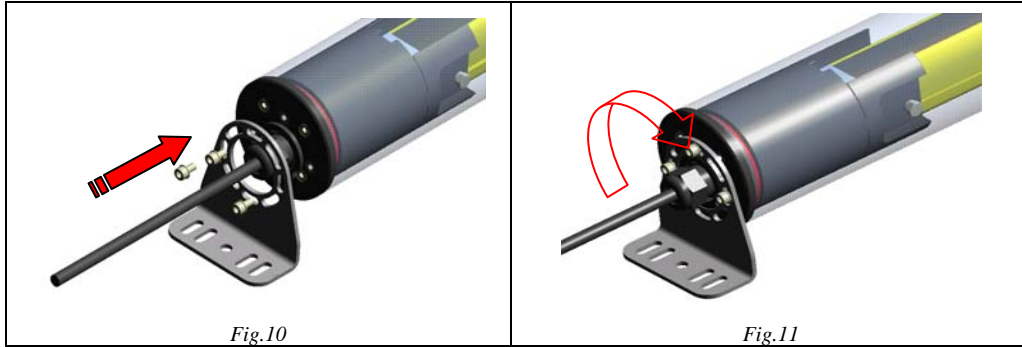


Fig.10

Fig.11

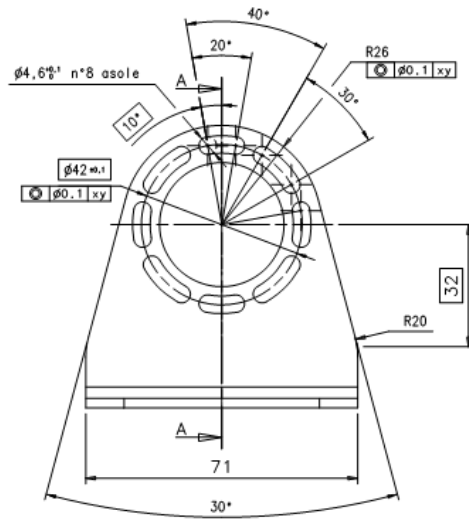


Fig.12

TECHNICAL DATA

OPTICAL DATA	
Operative distance / reduction factor:	10% for each unit
EAA aberration (<i>Effective Aperture Angle</i>)	None
MECHANICAL DATA	
Body material:	Weep-Spin-Dry Policril PMMA
Thickness	4 mm
Protection grade	IP67, IP68 and IP69K

CHEMICAL RESISTANCE TABLE

Tubular PMMA POLICRIL material chemical resistance table is available on product's datasheet.

AVAILABLE MODELS

MODEL	DESCRIPTION	ORDER No.
SG-IP69K 150	Tubular IP69K H=150mm	95ASE1290
SG-IP69K 300	Tubular IP69K H=300mm	95ASE1300
SG-IP69K 450	Tubular IP69K H=450mm	95ASE1310
SG-IP69K 600	Tubular IP69K H=600mm	95ASE1320
SG-IP69K 750	Tubular IP69K H=750mm	95ASE1330
SG-IP69K 900	Tubular IP69K H=900mm	95ASE1340
SG-IP69K 1050	Tubular IP69K H=1050mm	95ASE1350
SG-IP69K 1200	Tubular IP69K H=1200mm	95ASE1360
SG-IP69K 1350	Tubular IP69K H=1350mm	95ASE1370
SG-IP69K 1500	Tubular IP69K H=1500mm	95ASE1380
SG-IP69K 1650	Tubular IP69K H=1650mm	95ASE1390
SG-IP69K 1800	Tubular IP69K H=1800mm	95ASE1400